

BROCADE WEB TOOLS

STORAGE AREA NETWORK

Quickly Configure and Monitor Switches

HIGHLIGHTS

- Utilize an intuitive and easy-to-use interface for element-level management of Brocade Fabric OS (FOS)-based switches
- Streamline monitoring with at-a-glance views of switch, port, and FRU operational status
- Perform administration and configuration tasks for individual switches or ports
- Increase flexibility by performing administrative and configuration tasks from any remote location through a Web browser and Internet connection
- View real-time performance data for monitoring and tuning activities
- Easily manage Brocade licensed features such as Ports on Demand

Brocade® Web Tools, an intuitive and easy-to-use interface, enables IT organizations to monitor and manage single Brocade Fabric OS® (FOS)-based switches. Administrators can perform tasks by using a Java-capable Web browser from their laptops, desktop PCs, or workstations at any location with IP connectivity. In addition, Web Tools access is available through Web browsers and a secure channel via HTTPS.

EXTENSIVE ADMINISTRATION AND CONFIGURATION CAPABILITIES

To increase the level of detail for management tasks, Web Tools enables organizations to configure and administer individual ports or switches. User name and password login procedures protect against unauthorized actions by limiting access to configuration features.

Web Tools provides an extensive set of features that enable organizations to quickly and easily perform key administrative tasks such as:

- Configuring individual switches' IP addresses, switch names, and Simple Network Management Protocol (SNMP) settings
- Upgrading switch firmware and controlling switch boot options
- Maintaining administrative user logins and passwords
- Managing license keys, multiple user accounts, and RADIUS support for switch logins
- Enabling Ports on Demand capabilities
- Choosing the appropriate routing strategies (dynamic or static) for maximum performance
- Configuring links and managing Inter-Switch Link (ISL) Trunking over local or extended distances

BROCADE

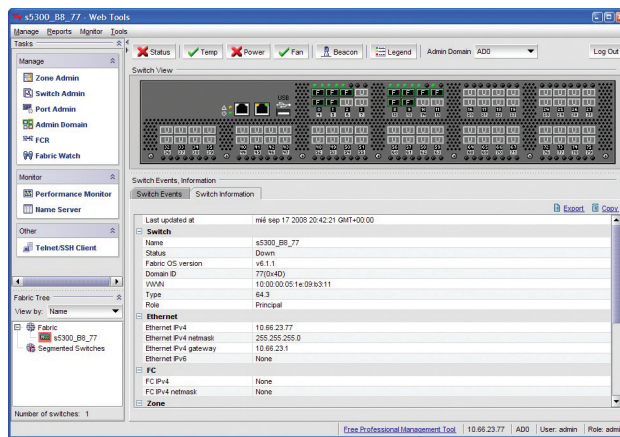


Figure 1.
Main Web Tools interface window on a Brocade 5300 Switch.

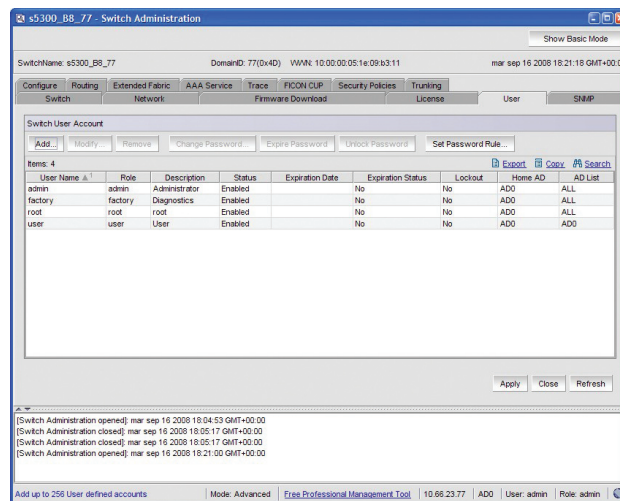


Figure 2.
Switch Administration pane.

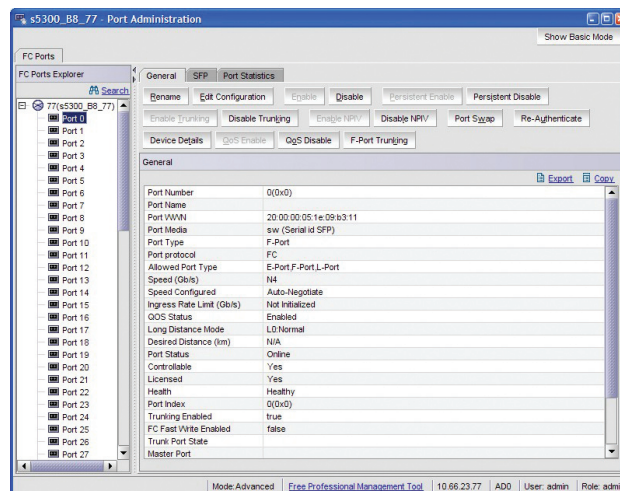


Figure 3.
Port Administration pane.

CENTRAL STATUS MONITORING TO SIMPLIFY MANAGEMENT

Web Tools enables the management of any switch in the fabric from a single access point. In addition, any single switch can automatically discover the entire fabric. When administrators enter the network address of any switch in the fabric, the built-in Web server automatically provides a full view of the fabric. From that point, administrators can monitor the status of, and perform tasks on, any switch in the fabric. (Note: Use Brocade Data Center Fabric Manager (DCFM) for group monitoring.)

MULTIPLE PANES FOR EASY ACCESS TO COMMON MANAGEMENT TASKS

The Web Tools main window is divided into several panes that provide access to switch status information and common management tasks.

Switch View

The Switch View pane provides an active, true-to-life rendition with a point-and-click map of the selected switch. Each port icon displays current port status, and clicking on a port displays the Port Detail View. The states of the power supply, fan, and temperature health are updated dynamically for real-time status monitoring. In addition, Tool icons in the Switch View provide direct access to different switch status reports, the Switch Beaconsing function, or Admin Domain context switching (see Figure 1).

Events and Information

The Events and Information pane provides a sortable view of all events reported by the switch. The event log includes sortable fields for switch information, time stamps, severity level, and detailed error messages for root cause analysis. This pane also provides basic switch information such as name, WWN, IP address, Fabric OS version, and serial number.

Tasks Pane

The Tasks pane provides access to most common switch management tasks, such as:

- **Switch Administration:** Provides the main control point for the switch, including tabs for network, switch, and port settings as well as user, license, firmware, routing, and SNMP administration. The Admin View also provides access to predefined reports and optional Brocade Advanced Fabric Services such as ISL Trunking or Extended Fabrics (see Figure 2).
- **Port Administration:** Displays statistics, general information, and live status monitoring of critical functions for rapid problem isolation and diagnosis. Support for Serial ID Small Form-Factor Pluggables (SFPs) enables asset management for these critical port components (see Figure 3).
- **Name Server View:** Displays basic information about all hosts and storage devices currently registered in the fabric. Hostname is available for hosts and Host Bus Adapters (HBAs) that support the FDMI-1 standard.
- **Performance Monitor:** Displays basic real-time performance information on a switch or individual port basis (see Figure 4).
- **Telnet/SSH Client:** Provides access to the Command Line Interface (CLI) via Telnet or Secure Shell (SSH) in order to perform special switch functions and diagnostics that are available only through the CLI.

Fabric Tree

The Fabric Tree displays all the switches in the fabric by their name, IP address, or WWN, along with their current status. Administrators can use the Fabric Tree as a shortcut to launch the element management for other switches in the fabric. (Note: Use Brocade DCFM for group management.)

MAXIMIZING INVESTMENTS

To help optimize technology investments, Brocade and its partners offer complete solutions that include education, support, and services. For more information, contact a Brocade sales partner or visit www.brocade.com.

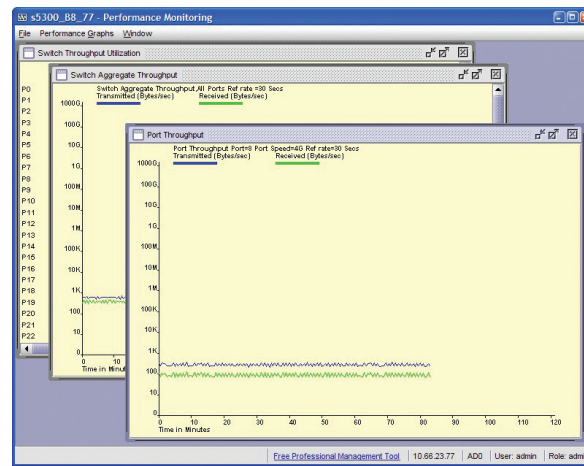


Figure 4.
Performance Monitor pane.

BROCADE WEB TOOLS SPECIFICATIONS**Interfaces**

In-band over a Fibre Channel link

Out-of-band through an Ethernet connection

System Requirements

Windows 2000, Windows XP, or Windows 2003

Solaris 2.8, 2.9, or higher

Redhat Linux 9.0 or higher

Minimum Windows Memory Requirements

<i>Number of Switches in SAN</i>	<i>Minimum Memory Required</i>
----------------------------------	--------------------------------

1-10	256 MB
------	--------

> 10	512 MB
------	--------

Browser Requirements

Netscape 4.77 and above for Fabric OS v2.x only

Internet Explorer 6.0 and above

Java Plug-In 1.4.2 on Solaris and Linux

Java Plug-In 1.3.1_04 or later on Windows

Corporate Headquarters

San Jose, CA USA

T: +1-408-333-8000

info@brocade.com

European Headquarters

Geneva, Switzerland

T: +41-22-799-56-40

emea-info@brocade.com

Asia Pacific Headquarters

Singapore

T: +65-6538-4700

apac-info@brocade.com

© 2008 Brocade Communications Systems, Inc. All Rights Reserved. 10/08 GA-DS-009-10

Brocade, the B-wing symbol, DCX, Fabric OS, File Lifecycle Manager, MyView, and StorageX are registered trademarks, and DCFM and SAN Health are trademarks of Brocade Communications Systems, Inc., in the United States and/or in other countries. All other brands, products, or service names are or may be trademarks or service marks of, and are used to identify, products or services of their respective owners.

Notice: This document is for informational purposes only and does not set forth any warranty, expressed or implied, concerning any equipment, equipment feature, or service offered or to be offered by Brocade. Brocade reserves the right to make changes to this document at any time, without notice, and assumes no responsibility for its use. This informational document describes features that may not be currently available. Contact a Brocade sales office for information on feature and product availability. Export of technical data contained in this document may require an export license from the United States government.

**BROCADE**